



# User's Manual

## Pack & Go Travel Mobile



© 2016 VTech  
All rights reserved  
Printed in China  
91-003308-001 (UK)

**VTech understands that a child's needs and abilities change as they grow and with that in mind we develop our toys to teach and entertain at just the right level...**

## **Pre-School**

**Interactive toys to develop their imagination and encourage language development**

## **vtech Baby**

**Toys that will stimulate their interest in different textures, sounds and colours**

### **I am...**

...responding to colours, sounds and textures

...understanding cause and effect

...learning to touch, reach, grasp, sit-up, crawl and toddle

**Birth-36 months**



### **I want...**

...to get ready for school by starting to learn the alphabet and counting

...my learning to be as fun, easy and exciting as can be

...to show my creativity with drawing and music so my whole brain develops

**3-6 years**



## **Electronic Learning Computers**

**Cool, aspirational and inspiring computers for curriculum related learning**

### **I need...**

...challenging activities that can keep pace with my growing mind

...intelligent technology that adapts to my level of learning

...National Curriculum based content to support what I'm learning at school

**4-10 years**



To learn more about this and other VTech® products, visit [www.vtech.co.uk](http://www.vtech.co.uk)

# INTRODUCTION

Thank you for purchasing the **VTech® Pack & Go Travel Mobile!**

The **Pack & Go Travel Mobile** by **VTech®** is the perfect mobile for babies on the go, featuring spinning stars, lights and soothing music. This compact mobile easily attaches to most cots, playpens, prams and baby carriers.

TIME SELECTOR  
SWITCH

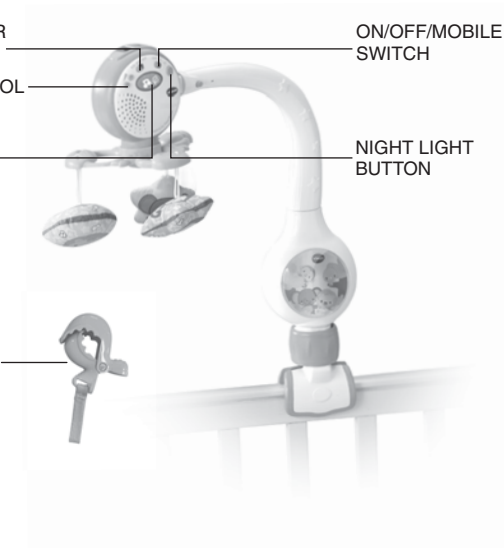
VOLUME CONTROL  
BUTTONS

LIGHT UP  
BUTTON

ON/OFF/MOBILE  
SWITCH

NIGHT LIGHT  
BUTTON

LOBSTER CLAW

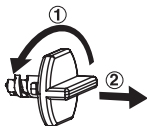


# INCLUDED IN THIS PACKAGE

- One VTech® Pack & Go Travel Mobile electronic module
- One mobile support post
- One mobile
- Three plush dangling stars
- One lobster claw with elastic strap with hook and loop closure
- One user's manual

**WARNING:** All packing materials, such as tape, plastic sheets, packaging locks and tags are not part of this toy, and should be discarded for your child's safety.

**Unlock the packaging locks:**

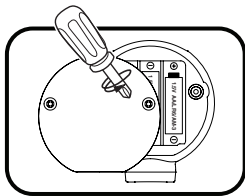


- ① Turn the packaging lock anticlockwise several times.
- ② Pull out and discard the packaging lock.

## GETTING STARTED

### BATTERY INSTALLATION

1. Make sure the unit is turned **OFF**.
2. Locate the battery cover on the back of the electronic module. Use a screwdriver to loosen the screw.
3. Install 3 new AA (AM-3/LR6 batteries following the diagram inside the battery box. (The use of new alkaline batteries are recommended for maximum performance).
4. Replace the battery cover and tighten the screw to secure.



## BATTERY NOTICE

- Use new alkaline batteries for maximum performance.
- Use only batteries of the same or equivalent type as recommended.
- Do not mix different types of batteries: alkaline, standard (carbon-zinc) or rechargeable (Ni-Cd, Ni-MH), or new and used batteries.
- Do not use damaged batteries.
- Insert batteries with the correct polarity.
- Do not short-circuit the battery terminals.
- Remove exhausted batteries from the toy.
- Remove batteries during long periods of non-use.
- Do not dispose of batteries in fire.
- Do not charge non-rechargeable batteries.
- Remove rechargeable batteries from the toy before charging (if removable).
- Rechargeable batteries are only to be charged under adult supervision.

## Disposal of batteries and product



The crossed-out wheellie bin symbols on products and batteries, or on their respective packaging, indicates they must not be disposed of in domestic waste as they contain substances that can be damaging to the environment and human health.

The chemical symbols Hg, Cd or Pb, where marked, indicate that the battery contains more than the specified value of mercury (Hg), cadmium (Cd) or lead (Pb) set out in Battery Directive (2006/66/EC).



The solid bar indicates that the product was placed on the market after 13th August, 2005.

Help protect the environment by disposing of your product or batteries responsibly.

For more information, please visit:

[www.recycle-more.co.uk](http://www.recycle-more.co.uk)

[www.recyclenow.com](http://www.recyclenow.com)

## DEMO TAG

The demo tag should be removed automatically when the product is taken out of the packaging. If the demo tag is still in position, please remove the plastic strip from the back of the product before placing in a cot. This will activate normal play.

With the **VTech® Pack & Go Travel Mobile**, safety comes first.

- Keep the mobile out of baby's reach. To avoid entanglement injuries, please remove the mobile portion from the cot or playpen once baby begins sitting or pushing up on all fours.
- Age range of mobile - Birth to 5 months
- The cot mobile is intended for visual stimulation and is not intended to be grasped by a child.
- Always attach all provided fasteners (strings, straps, clamps, etc). tightly to the cot according to the instructions. Check frequently. Attach only to cots with sturdy rails and spindles.
- Do not add additional strings or straps to attach to a cot.
- To ensure your child's safety, this product should be assembled by an adult.
- Please make sure that the cot attachment straps are out of your child's reach.
- NEVER use this product in a motor vehicle. Death or serious injury can occur from hard objects in the event of a motor vehicle accident.

To ensure your child's safety, this product should be assembled by an adult. Please ensure that the cot attachment clamp is securely locked into position to avoid injury. Follow the instructions below carefully and make sure that the final assembly is correct.

## ASSEMBLY INSTRUCTIONS

1. Attach the three plush stars to the mobile. Thread the cord from one of the plush stars up through the hole in the bottom of one of the leaves, then thread it down through the hole on the opposite side. Secure the loop over the notch on the underside of the leaf. Pull gently on the star to make sure it is securely fastened. Follow the above instructions for the remaining stars.



2. Attach the mobile to the bottom of the electronic module. You will hear the mobile click into place when inserted correctly.



3. Attach the mobile support post to cots and playpens with rails that are between 1.02cm and 3.98cm wide. Twist the blue sleeve to tighten the clamp to the cot rail or playpen. Pull slightly on the post to make sure the clamp has been securely fastened. Please check the post frequently to ensure it is still secure.



4. Attach the electronic module to the support post by pressing the small blue button on the support post while sliding the electronic module onto the support post . Check to make sure the electronic module is attached securely to avoid injuries.



5. To use the mobile as a travel mobile, remove the electronic module from the mobile support post by pulling gently on the electronic module while pressing the blue button to the right of the electronic module.



6. Thread the elastic hook and loop closure through the slot on the top of the electronic module, securing the hook and loop fabric together.





7. Use the elastic loop or the lobster claw to attach the mobile to baby carriers or prams. Always check to make sure the mobile is attached securely to avoid injuries.

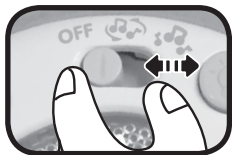




# PRODUCT FEATURES

## 1. ON/OFF/MOBILE SWITCH

To turn the unit **ON**, slide the **ON/OFF MOBILE SWITCH** to the **TURNING MODE** (  ) or the **STATIONARY MODE** (  ) position. To turn the unit **OFF**, slide the **ON/OFF/MOBILE SWITCH** to the **OFF ( OFF )** position.



## 2. TIME SELECTOR SWITCH

Slide the **TIME SELECTOR SWITCH** to the **10**, **20** or **30** minute position.



## 3. VOLUME CONTROL BUTTONS

To adjust the volume, press the **VOLUME +** and **VOLUME -** buttons.



## 4. NIGHT LIGHT BUTTON

Press the **NIGHT LIGHT BUTTON** to turn the night light on or off. This feature only works when the mobile is connected to the mobile support post.



## 5. SOUND SENSOR

The **VTech® Pack & Go Travel Mobile** is equipped with a special sound sensor. To preserve battery life, the sound sensor will only function when the mobile is connected to the mobile support post. Once the selected time setting has ended, the unit will automatically shut off. The sensor will reactivate the program when it detects baby's cry for approximately 4 seconds without interruption.

## 6. AUTOMATIC SHUT OFF

To preserve battery life, the **VTech® Pack & Go Travel Mobile** will automatically shut off after the selected time has ended. The unit can be turned on again by pressing any button.

**Note:** If the unit repeatedly shuts off quickly or the light up button fades out, we suggest changing the batteries.

## ACTIVITIES

- Slide the **ON/OFF/MOBILE SWITCH** to the **TURNING MODE** ( 🎵 ) or the **STATIONARY MODE** ( 🎵 ) position to turn the unit **ON**. You will hear a soothing phrase followed by soothing music. The light up button will fade in and out with the sound when the electronic module is removed from the mobile support post.



- Press the **LIGHT UP BUTTON** to play the next song or melody. Hold down the **LIGHT UP BUTTON** to hear a short tune. The light up button will fade in and out with the sounds when the electronic module is removed from the mobile support post.



# MELODY LIST

1. Suo Gân
2. All Through the Night
3. Frère Jacques
4. Baa Baa Black Sheep
5. Cradle Song - Mozart
6. Hot Cross Buns
7. Humpty Dumpty
8. Hush Little Baby
9. Rock-a-bye Baby
10. Jack and Jill
11. Little Bo Peep
12. Little Miss Muffet
13. London Bridge
14. Muffin Man
15. Here We Go Round the Mulberry Bush
16. Polly Put the Kettle On
17. Pussy Cat, Pussy Cat
18. Ring Around the Rosy
19. Row, Row, Row Your Boat
20. Too-Ra-Loo-Ra-Loo-Ra
21. Sing a Song of Sixpence
22. Swing Low, Sweet Chariot
23. Twinkle, Twinkle, Little Star
24. One Man Went to Mow a Meadow
25. Bicycle Built for Two
26. Cock Robin
27. Itsy Bitsy Spider
28. It's Raining, It's Pouring
29. Rain Rain Go Away
30. There's a Hole in My Bucket
31. Do Your Ears Hang Low?
32. I'm a Little Teapot
33. My Bonnie Lies Over the Ocean
34. To Market, To Market

- 35. Three Blind Mice
- 36. Clementine
- 37. Molly Malone (Cockles and Mussels)
- 38. Goodnight Ladies
- 39. Alouette
- 40. Beautiful Dreamer

## **SING-ALONG SONG LYRICS**

### **SONG 1**

Hush, little baby, don't say a word.  
Mama's gonna buy you a mockingbird.  
And if that mockingbird won't sing,  
Mama's gonna buy you a diamond ring.

### **SONG 2**

Sleep, my child, and peace attend thee,  
All through the night.  
Guardian angels I will send thee,  
All through the night.

### **SONG 3**

Row, row, row your boat.  
Gently down the stream.  
Merrily, merrily, merrily, merrily,  
Life is but a dream.

## CARE & MAINTENANCE

1. Keep the unit clean by wiping it with a slightly damp cloth.
2. Keep the unit out of direct sunlight and away from any direct heat source.
3. Remove the batteries when the unit will not be in use for an extended period of time.
4. Do not drop the unit on hard surfaces and do not expose the unit to moisture or water.

## TROUBLESHOOTING

If for some reason the program/activity stops working, please follow these steps:

1. Please turn the unit **OFF**.
2. Interrupt the power supply by removing the batteries.
3. Let the unit stand for a few minutes, then replace the batteries.
4. Turn the unit **ON**. The unit should now be working again.
5. If the product still does not work, install a new set of batteries.

If the problem persists, please call our Consumer Services Department on 01235 546810 (from UK) or +44 1235 546810 (outside UK) and a service representative will be happy to help you.

### IMPORTANT NOTE

Creating and developing **VTech®** products is accompanied by a responsibility that we at **VTech®** take very seriously. We make every effort to ensure the accuracy of the information, which forms the value of our products. However, errors sometimes can occur. It is important for you to know that we stand behind our products and encourage you to call our Consumer Services Department on 01235 546810 (from UK) or +44 1235 546810 (outside UK), with any problems and/or suggestions that you might have. A service representative will be happy to help you.



**CLASS 1  
LED PRODUCT**



# PRODUCT REGISTRATION

Visit [www.vtech.co.uk/clubvtech/login](http://www.vtech.co.uk/clubvtech/login)  
to register your VTech product

By joining the VTech Club you can also enter competitions, find out about news and events, seek expert advice for parents and let your kids play fun learning games and activities.



## PRODUCT WARRANTY

Thank you for choosing this quality product from VTech. We hope it will bring many hours of entertainment, imaginative play and learning.

1. The product detailed above is covered by a one year warranty from the date of purchase, against any defects in materials or workmanship.
2. The product may be returned to the place of purchase. Alternatively the product can be returned to VTech Electronics Europe plc (see address below), with proof of purchase, without proof of purchase no replacement will be provided.
3. VTech Electronics Europe plc will examine the product and if it is found to be defective due to faulty materials or workmanship, will replace the product at their discretion.
4. If the product covered by this warranty is damaged due to misuse, modification or unauthorised repair, or because of faulty batteries, battery discharge or incorrect electrical connections, then this warranty becomes void.
5. This warranty is personal to the original purchaser and is not transferable.
6. Breakages to the LCD screen are not covered by the warranty.
7. Returns to VTech Electronics Europe plc should include a cheque or postal order for £1.50 towards the cost of return postage and packaging.
8. Products returned to VTech Electronics Europe plc, should be addressed as follows and packed carefully to avoid damage in transit (Please do not include batteries or adaptor). Please include details of the fault together with your name and address.
9. To keep an online record of your warranty, please register your product online at [www.vtech.co.uk/warranty](http://www.vtech.co.uk/warranty)

Vtech Electronics EU PLC, c/o XPO Logistics, Warehouse 350, Cat & Fiddle Lane, West Hallam, DE7 6HE

THIS WARRANTY IS OFFERED AS AN EXTRA BENEFIT AND DOES NOT AFFECT CONSUMERS' STATUTORY RIGHTS.

This warranty is valid for the UK and Eire only. For products purchased outside the UK and Eire, please contact your local distributor or place of purchase.



UK